

→ references 2019

# NORTH BRIDGE



# NORTH BRIDGE

## Location

Parma, Italy

## Client

STU Authority – Società di Trasformazione Urbana S.p.A.

## Contractor

Europa Scarl

## Scope of work

Design, fabrication and installation of steel structures

## Period of execution

2011

## Weight

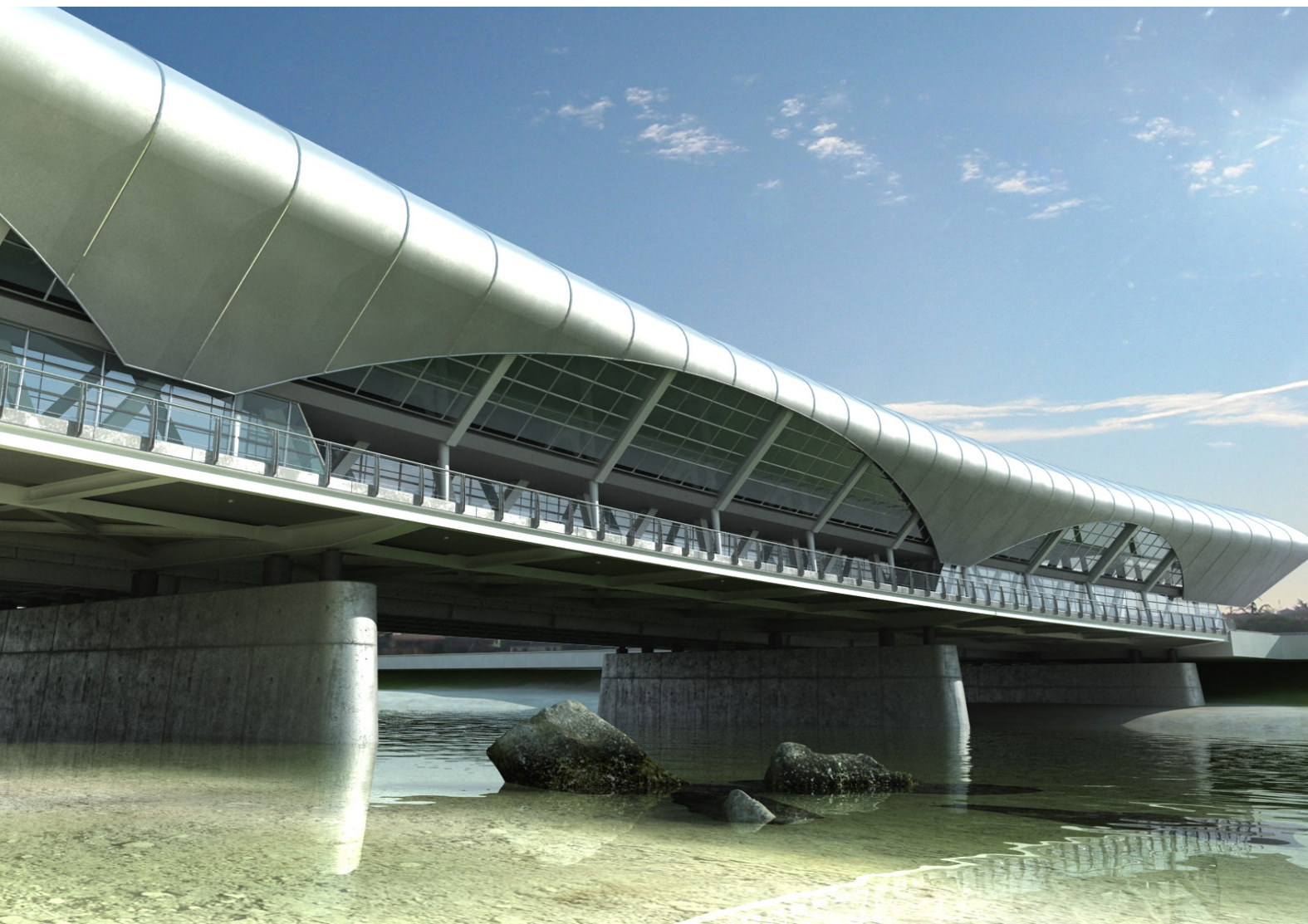
1.100 tons

## Length

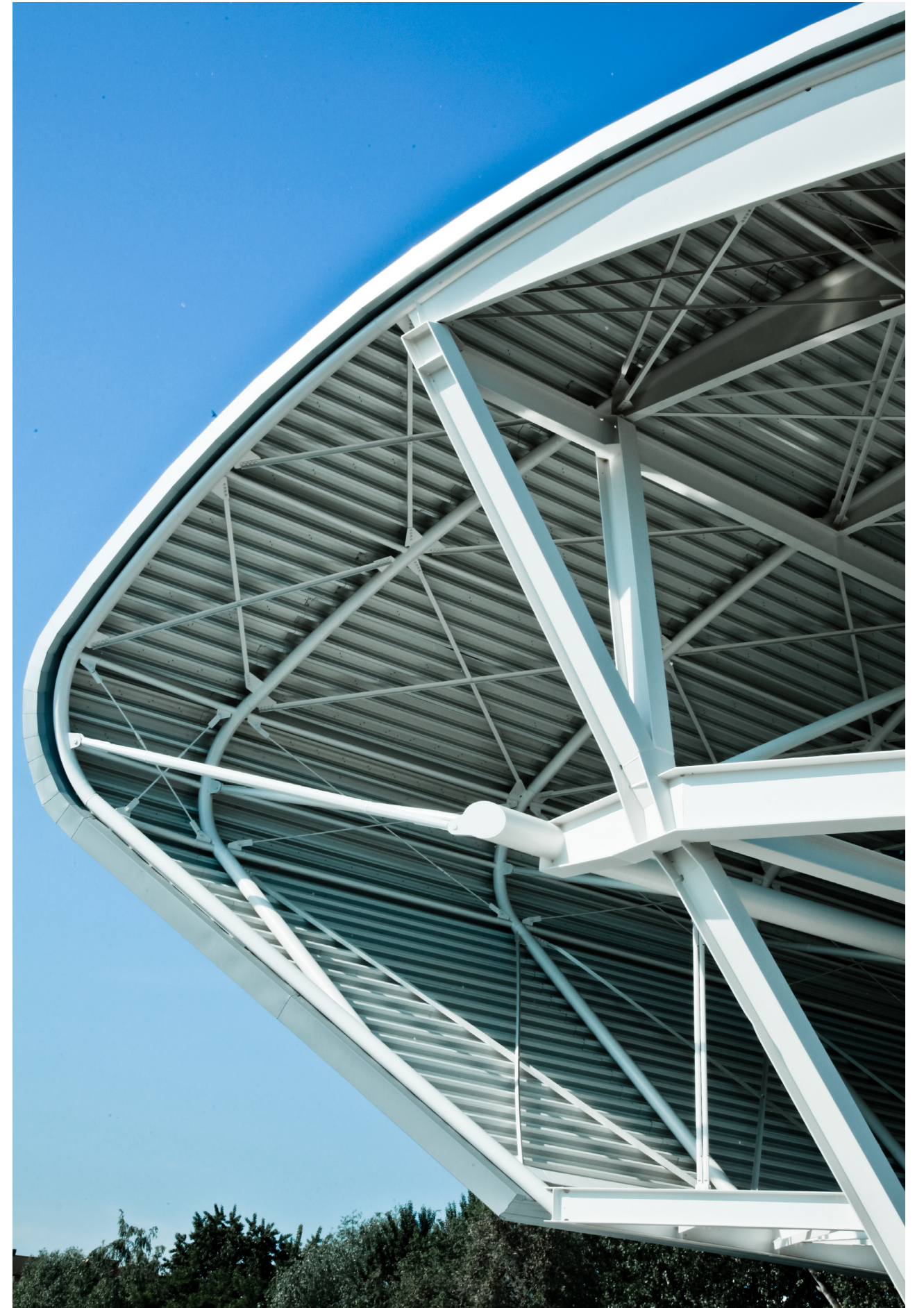
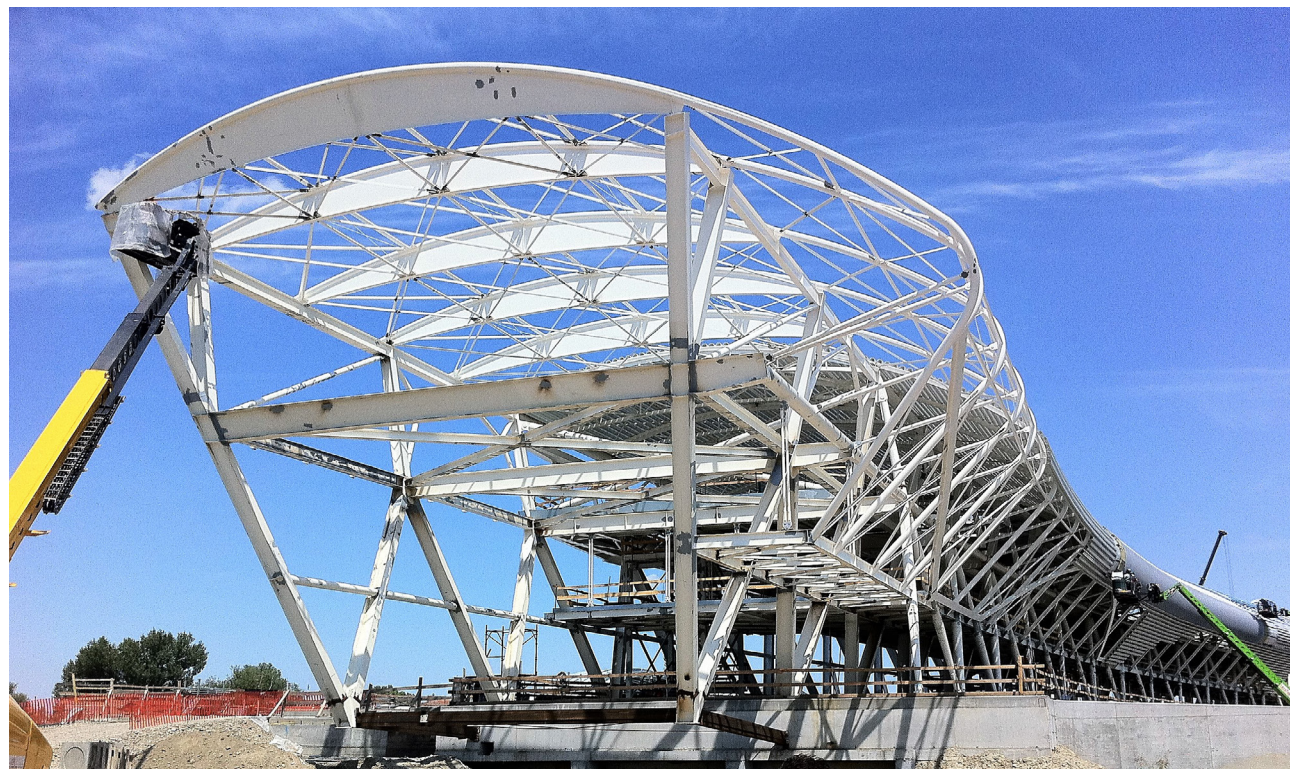
160 meters

The project has been conceived to connect the Parma railway station to EFSA (European Food Safety Authority), with the aim also to offer commercial and expositive areas hosting scientific and educational spaces as well as start-ups.

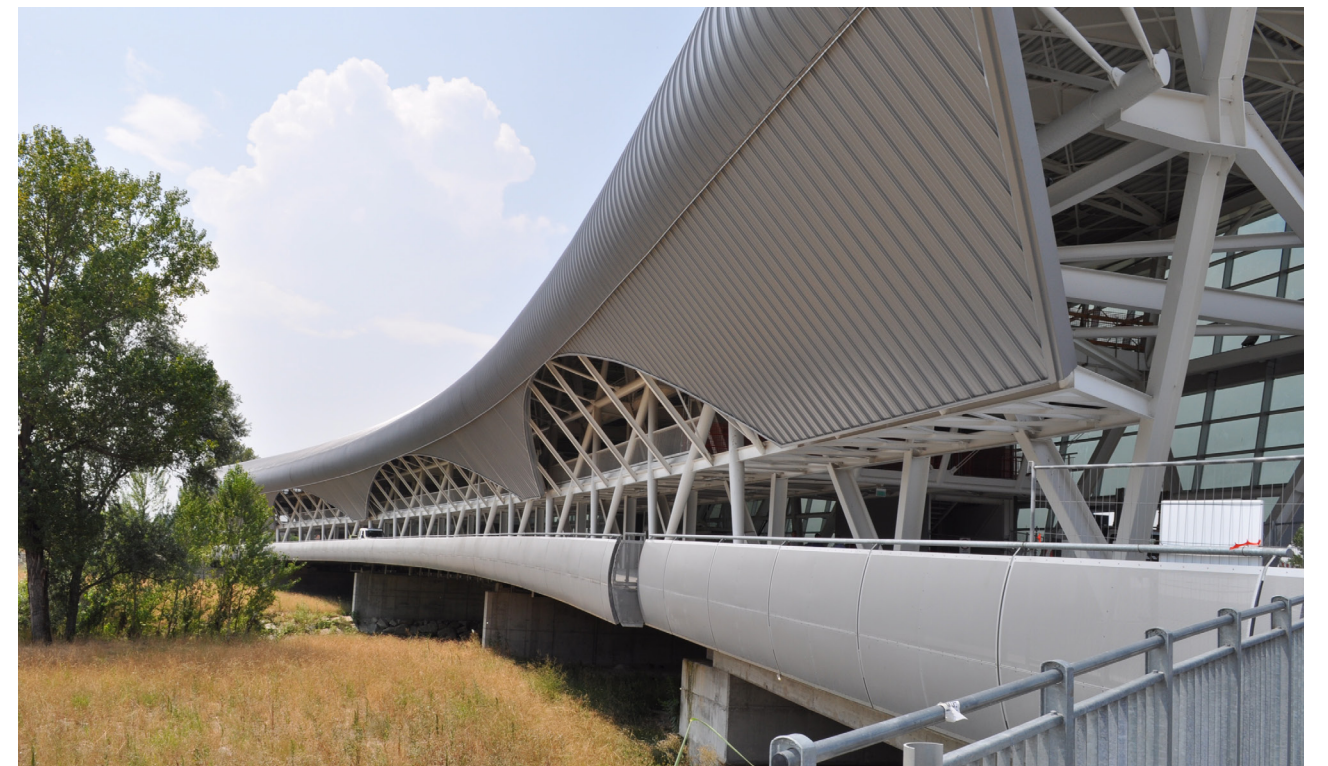
The North Bridge consists of two parallel bridges: a road one, made of four lanes, and another pedestrian one developing on three planking levels for a height of 15 meters. Realized in steel and glass, it has a total length of 160 meters composed of three spans laying on two concrete pillars, reaching an overall weight of the steel structures of 1.100 tons.



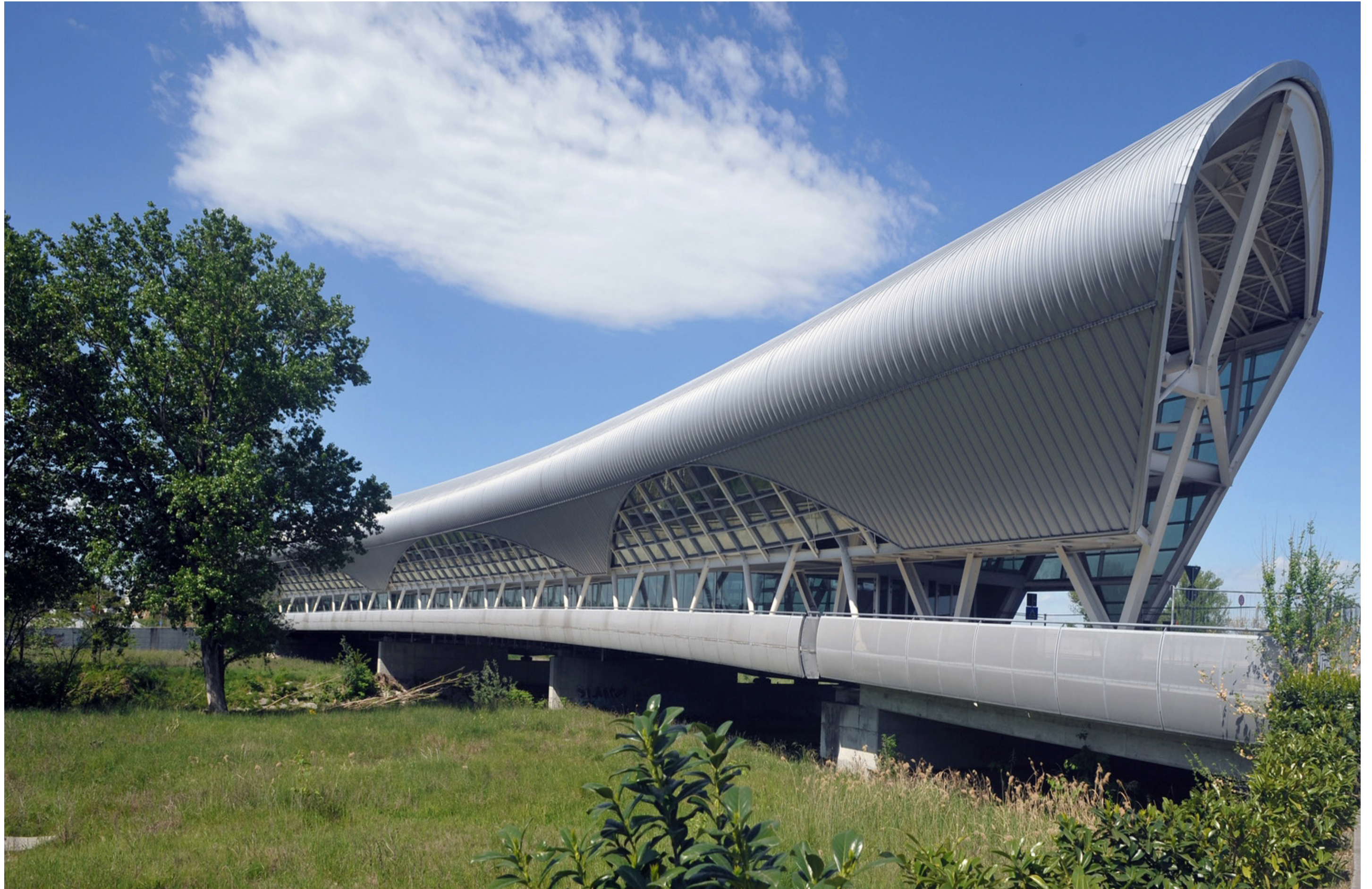














Ideas  
**shape**  
the  
World

Maeg Costruzioni S.p.A.  
Via Toniolo 40  
31028, Vazzola (TV) - Italy  
+39 0438 441558  
[www.maegspa.com](http://www.maegspa.com)